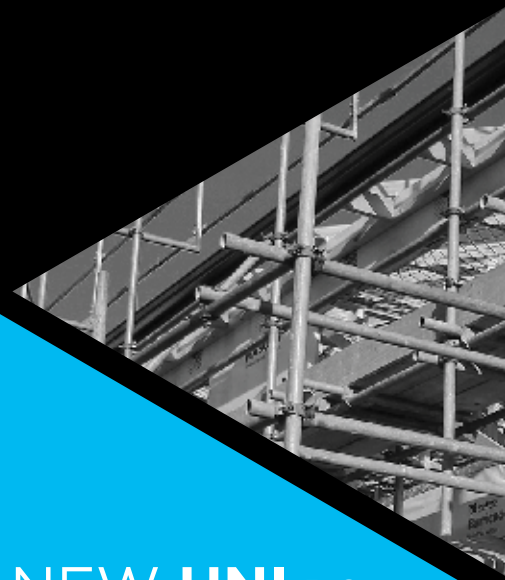




VOLUME 11

MASONS

Designed Smart, Built Tough.



NEW **UNI** P.2
FLEXIBLE AIR
BARRIER

BUILDING WRAP
SYSTEM P.6



TRADE ISSUE

WRAP ENCLOSURE SYSTEM

EXPANSION FOAMS

VENTS, GRILLES & DIFFUSERS

MASONS
Designed Smart, Built Tough.

The Evolution of Masons

A brickie from Brisbane

Trent Mason comes from a family full of bricklayers, with his grandfather, father, uncle and brother all being bricklayers, so it was only natural that he started learning the bricklaying trade. In 1992 at the age of 15, Trent began his Bricklaying Apprenticeship with his father in Brisbane Queensland Australia.

At the age of 19 Trent arrived in New Zealand with the intentions of a year long working holiday but ended up staying a lot longer. A year later the desire to become self-employed became reality when Trent set up Mason Bricklayers and started contracting around Auckland (Mason Bricklayers eventually got sold around 10 years later).

Evolution of the product range

After identifying the lack of access to Bricklayers tools and machinery Trent decided to import tools from Australia and set up a Brickies tool shop called “Masons Brickies and Plastering Gear Ltd”.

Trent saw a niche in the market to plaster brick buildings, *“with all the leaking houses going on around the place with various design flaws, it just made sense, considering this is the type of construction I grew up knowing from Brisbane”* hence the brand at the time “Plastabrick” to which is still part the Masons name now being “Masons Plastabrick Ltd”.

Masons progressed to manufacturing their own render for their plastered brick houses, which now has evolved to a full range of exterior plaster cladding systems and renders.

Adding to the bricklayers range of products Masons designed and started manufacturing the Masons Brick-tie and concrete admixtures. Masons Brickties are now the largest seller of brickties and have become the ‘go-to’ name for bricklaying tools and consumable in New Zealand.

Through the years Masons kept strengthening the brand product by product. Masons now offer an extensive range of exterior building products from the frame out, which are; building wraps, brickties, DPC, self-adhesive window tapes, concrete admixtures, wrap strapping, bituminous sealers, PEF rods and exterior plaster cladding systems.



2017- Masons Warehouse in Silverdale



2000- Trent Mason (Blue shirt front) and Team

Legal Notes

The informations, and, in particular, the recommendations relating to the application and and-use of Masons products, Are given in good faith based on Masons current knowledge and experience of the products when properly stored, handled and applied under normal conditions in accordance with Masons recommendations. In practice, the differences in materials, substrates and actual site conditions are such that no warranty in respect of merchantability or of fitness for a particular purpose, nor any liability arising out of any legal relationship whatsoever, can be inferred either from this information, or from any written recommendations, or from any other advice offered. The user of the product must test the product's suitability for the intended application and purpose. Masons reserves the right to change the properties of its products. The proprietary rights of third parties must be observed. All orders are accepted subject to our current terms of sale and delivery. Users must always refer to the most recent issue of the local Product Data Sheet for the product concerned, copies are available on our website. www.masons.nz

Contents

Building Products

UNI - Flexible Air Barrier	2
Barricade FR - Fire Retardant Building Wrap	6
Barricade - Blank Building Wrap	8
Wrap Tape - Repair & Seam Tape	7
WrapStrap - House Wrap Strapping	10
Insulation Strap - Insulation & Wrap Strapping	10
Dry Fix - Damp Proof Course	11
40 Below - Window Flashing Tape	12
Hydro - Bituminous Flashing Tape	14
Floor Guard - Temporary Surface Protection	15
PEF Rod - P.E.F. Foam Backer	16
Fence Wrap	17
Enviro - AAC Floor Panel	19

Concrete & Tanking Products

HT Green - Polyethylene Concrete Underlay	20
Easy-Foam - Adhesive Expansion Joint Filler	21
Hydro Seal - Bituminous Masonry Sealer	22
Foam Guard - Adhesive Membrane Protection	23

Vents & Access panels

Grilles & Vents	24
Air Diffuser	29
Brick & Block Vent Range	30
Access Panel	31

Brick Essentials

BrickTies - Heavy Duty Brick Ties	32
Brick & Block Lock - Masonry Reinforcing	33

UNI[®]

Flexible Air Barrier

GIVES YOU A HEAD START

**CARRY ON
INSIDE**

**WHILE YOU
WAIT FOR CLADDING
OUTSIDE**



MASONS
Designed Smart, Built Tough.

UNI FAB[®] (Flexible Air Barrier)



**SPEEDS UP THE BUILDING
PROCESS BY WEEKS**



**FRACTION OF THE COST OF
RIGID AIR BARRIERS**



**QUICK & EASY TO
TRANSPORT AND INSTALL**

UNI is a reinforced Flexible Air Barrier that allows work to continue on the inside of the building (for up to 90 days) without waiting for the cladding to be completed.



MASON.S.NZ





UNI

FAB® (Flexible Air Barrier)



NEW

UNI is a Flexible Air Barrier (FAB®) that allows work to continue on the inside of the building without waiting for the cladding to be complete. This is due to UNI's unique reinforcing and waterproof features.

Applications

- Commercial and Residential construction
- UNI is absorbent and can be used with **all cladding systems**.
- UNI is **strong and durable**, suitable for all areas of New Zealand including up to **'Very High' wind zones** of NZS 3604 and "Extra High" over rigid wall underlays.
- UNI performs over **timber or steel** framing.
- UNI is suitable to be used as a **non rigid backing for stucco plaster**.
- UNI is suitable as an **air barrier** on walls that are not lined.
- Vertical use only, not suitable as a roof underlay.

New Zealand Building Code Standard (NZBC)

The following tests have been carried out in accordance with NZBC Acceptable Solution E2/AS1 Table 23:

- Tensile strength, edge tear resistance with AS/NZS 4200:2017;
- Resistance to water vapour transmission in accordance with ASTM E96;
- Resistance to water penetration in accordance with AS/NZS 4201.4:1994;
- Surface water absorbency in accordance with AS/NZS 4201.6:1994;
- Air resistance to BS 6538.3:1987;
- Shrinkage in accordance with AS/NZS 4201.3:1994;
- pH of extract in accordance with AS/NZS 1301.421s:1998;
- Beal weathertightness test 112 a modification from AS/NZS 4284:2008 and E2/VM1.

Physical Properties

- UNI is a 230gsm non-woven breathable synthetic flexible air barrier, reinforced by a fibreglass scrim.
- UNI is water resistant and designed to provide temporary protection from weather conditions and UV exposure to timber framing without the installation of the cladding, which allows for the continuation of internal work on the house for 90 days after installation.
- UNI has passed a water head test at 150mm at 48 hours! vs normal building wraps which are tested to a 20mm head of water at 24 hours.

UNI Wrap Product Codes	Masons Code
UNI Flexible Air Barrier 2.74m X 50m2	UNI2.74X50

UNI Fasteners Product Codes	Masons Code
UNI Fasteners Galv Nail and Washer 32mm QTY 2500	UNIFASTGN
UNI Cap Nailer Gun	UNICAPNAILER
UNI Nail/Washer Pack for UNI Gun QTY 2000	UNINAILPACK





UNI Flexible Air Barrier

Installation Instructions

This installation manual is to be read in conjunction with the Certmark UNI assessment brief.

General Instructions

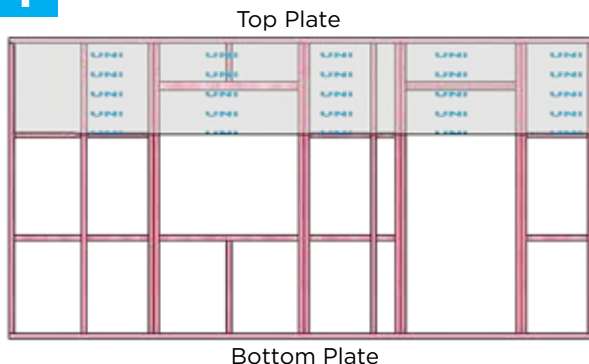
- Fix with the printed side out.
- Run the wrap horizontally.
- Pull taut over the framing before fixing.
- Only to be fixed with Masons UNI Fasteners either with a gun or hammer.
- Be lapped not less than 75mm at horizontal joints; Have upper sheets lapped over lower sheets to ensure that direction of laps will allow water to be shed to outside of the wall underlay.
- Be lapped not less than 150mm over studs at vertical joints.
- Extend 50mm below bottom plate or bearer



Tools Required

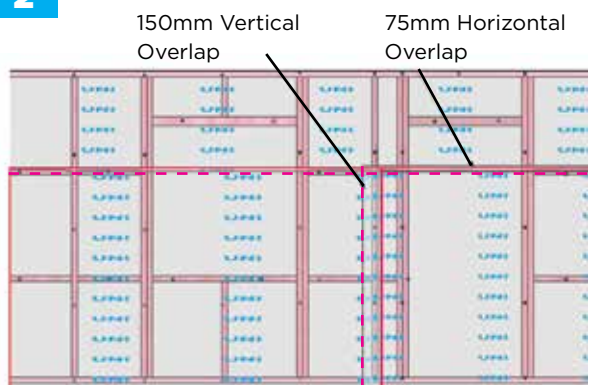
- Masons UNI Fasteners
- Hammer or Fastener Gun
- Masons 40 BELOW - Flashing Tape
 - 75mm; for seams of overlaps
 - 150mm; for window flashings
- Cutting Knife

1

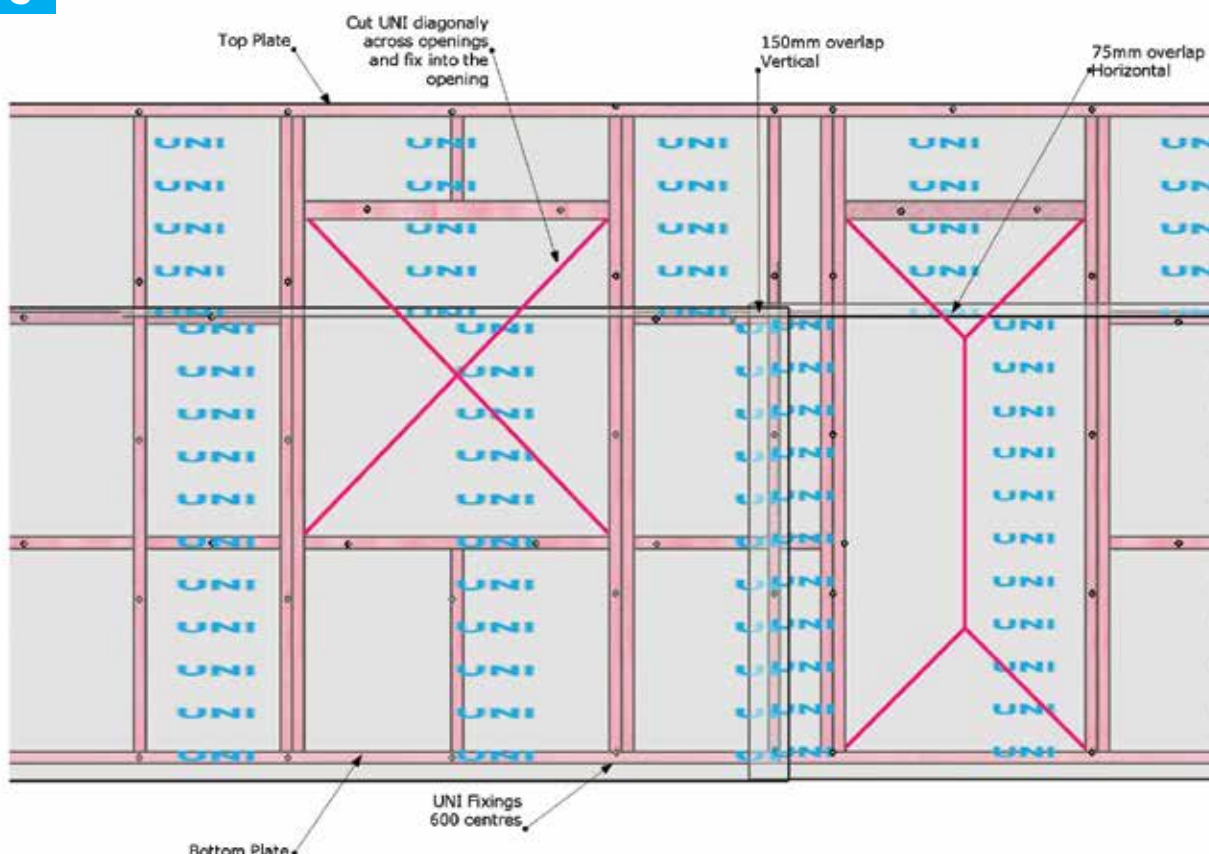


- Run a 600mm UNI soffit strip taut along the top and over the top plate. Secure with UNI Fasteners at 600mm centres.

2



- Run UNI horizontally extend from the upper-side of the top plate to the under-side of the bearers or wall plates supporting ground floor joists, or a minimum of **50mm below bottom plates** on concrete slabs.
- Horizontal laps must be no less than 75 mm wide and require to be taped off with Masons 75mm **40 BELOW** - Window Flashing Tape.
- End laps must be made over stud framing, be no less than 150 mm wide and must be fully sealed and taped off using Masons 40 below self-adhesive window tape.



- **Uni Nail & Screw washers** - It is important to secure UNI with masons UNI 32mm Nail/washer fasteners as they rapidly increase the holding power of UNI at 600mm centres over normal 8-10mm staples. For steel frame use UNI washers with either a Phillips or square drive self-drilling screw.
- **Installing cavity battens** - When installing timber cavity battens using UNI fasteners you must keep the batten nail a minimum of 100mm away from the UNI fastener.
- **Brick Veneer construction** - Masons brick ties have been subjected to the BEAL Modified E2/VM1 test with UNI as a system therefore Masons brick ties can only be used over the top of UNI.
- UNI when installed taught will assist in restraining from bulging into the drained cavity due to the high strength reinforced core, however should bulging occur the UNI must be restrained from bulging into the drained cavity in accordance with E2/AS1 Masons wrap strap can be used to assist with this, any penetration to UNI with staples must be stapled over the top of Masons 40 below flashing to provide moisture seal ability around the staple.
- **Joinery Openings** - The wall underlay should be run over openings and left covered until windows and doors are ready to be installed.
- Openings are formed in the membrane by cutting diagonal from each corner of the penetration. The flaps of the cut membrane must be folded inside the opening and stapled to the penetration framing. Excess underlay may be cut off flush with the internal face of the wall frame.
- **Penetrations** - Pipe or Service penetrations must be sealed/flashed immediately.
- UNI Flexible air barrier can be added as a second layer over head flashings in accordance with the requirements of Acceptable Solution E2/AS1, Paragraph 9.1.7(e).



View UNI's installation video online by clicking the QR code or visit [masons.nz](https://www.masons.nz)

IMPORTANT: consult the [UNI on-site checklist](#) directly after application. The checklist must be completed as part of the product warranty. This includes daily UNI inspections by the site supervisor.



MASONS
Designed Smart, Built Tough.

Barricade FR



FIRE RETARDANT



**RESISTS UV EXPOSURE
FOR UP TO 60 DAYS**

**SUITABLE FOR ALL
FRAME & CLADDING SYSTEMS**

CUSTOM BRANDING AVAILABLE

MASONS.NZ





Barricade FR

Fire Retardant - Building Wrap

NEW

Barricade FR is a fire rated building wrap suitable for all frame and cladding systems with or without cavity and holds a Codemark Certificate.

Applications

- Where a **fire retardant wrap is required**
- Barricade FR is **absorbent** and can be used with absorbent and non-absorbent cladding
- Barricade FR is **strong and durable**, suitable for all areas of New Zealand including up to **'Very High' wind zones** of NZS 3604 and "Extra High" over rigid wall underlays.
- Barricade FR is suitable for use with **all cladding systems**
- Barricade FR performs over **timber or steel** framing.
- Barricade FR is suitable to be used as a **non rigid backing for stucco plaster**
- Barricade FR is suitable as an **air barrier** on walls that are not lined
- May be used on **gable ends**
- Vertical use only, not suitable as a roof underlay

New Zealand Building Code Standard (NZBC)

The following tests have been carried out in accordance with NZBC Acceptable Solution E2/AS1 Table 23:

- Tensile strength, edge tear resistance and resistance to water vapour transmission in accordance with ASNZS 4200.1
- Resistance to water penetration in accordance with AS/NZS 4201.1.4
- Surface water absorbency in accordance with AS/NZS 4201.6
- Air resistance to BS 6538.3
- Shrinkage in accordance with AS/NZS 4201.3
- pH of extract in accordance with AS/NZS 1301.421s
- Fire retardant in accordance with AS1530 Part 2 Flammability

Physical Properties

- Barricade FR Wrap is a non-woven fire retardant, water resistant, breathable synthetic wall underlay for use under direct fixed and non-direct fixed wall cladding on timber framed and steel framed buildings. The product is manufactured from high quality synthetic spun bonded material with high UV qualities.
- Barricade FR has unique anti fungal properties
- Barricade FR resists UV exposure for up to 60 Days

Masons Building Wraps	Masons Code
Barricade FR Building Wrap 2.74m x 50m ²	BFRMPB2.74x50
Barricade FR Building Wrap 2.74m x 100m ²	BFRMPB2.74x100
Barricade FR Building Wrap 1.37m x 100m ²	BFRMPB1.37x100
Barricade FR Building Wrap 1.37m x 50m ²	BFRMPB1.37x50
Barricade FR Building Wrap 1.37m x 25m ²	BFRMPB1.37x25
Barricade FR Building Wrap 0.6m x 21.9m ²	BFRMPB0.6x22



Barricade™

Blank Building Wrap

BEST BUY

Barricade Blank Building Wrap has a unique clear breathable overlay, which allows moisture and condensation to run off the face and then evaporate in the cavity area. Great performing and affordable wrap when a fire rating is not required.

Applications

- Barricade is designed to **repel water, avoiding any mould**
- Barricade has a clear film overlay that is designed to provide a consistent **breathable surface**
- Barricade's breathable clear film, allows **water to simply slide off** the fabric
- Barricade is **strong and durable**, suitable for all areas of New Zealand including **'Very High' Wind Zones** of NZS 3604 and "Extra High" over rigid wall underlays.
- Barricade is suitable for use with **all cladding systems with a cavity**
- Barricade performs over **timber or steel framing**
- Barricade is suitable to be used as a **non rigid backing** for stucco plaster
- Barricade is suitable as an **air barrier** on walls that are not lined
- May be used on **gable ends**
- Vertical use only, not suitable as a roof underlay

*NB. This underlay is **not** suitable for use with direct fixed non-absorbent wall cladding, e.g. metal or plastic based claddings.*

New Zealand Building Code Standard (NZBC)

The following tests have been carried out in accordance with NZBC Acceptable Solution E2/AS1 Table 23:

- Tensile Strength, edge tear resistance and resistance to water vapour transmission in accordance with AS/NZS 4200.1
- Resistance to water penetration in accordance with AS/NZS 4201.4
- Surface Water absorbency in accordance with AS/NZS 4201.6
- Air resistance to BS 6538.3
- Shrinkage in accordance with AS/NZS 4201.3
- pH of extract in accordance with AS/NZS 1301.421s

Physical Properties

Barricade Building Wrap is a 90 GSM hydrophobic non-woven breathable composite building wrap.

- Barricade has unique anti fungal properties
- Barricade resists UV exposure for up to 42 Days



Masons Building Wraps	Roll Sizes	Masons Code
Barricade Blank Wrap - 100m²	H 2.74 m x L 36.49 m	BLMPBBW100 2.74M



Wrap Tape

Repair & Seam Tape

Wrap Tape is used to repair cuts in the building wrap and to seal off jointing seams where the building wrap overlaps.

Wrap Tape has an aluminium fibreglass woven backing with a synthetic rubber adhesive. The fibreglass woven backing gives the tape its strength, making it tear resistant in extreme conditions. The synthetic rubber adhesive gives the tape ultimate adhesion power in any weather condition.

Physical Properties

Carrier:	Fibre Cloth
Thickness:	0.25mm
Adhesive:	Rubber
Initial tack(#):	≥26
Holding Power(h):	10

Description	Masons Code
Masons Wrap Repair Tape 50mmx20m	WRAPREPAIRTP



Masons excels in bringing innovative products to the NZ building market.

What will our next innovative product be?



You can find out by:
Signing up to our newsletter

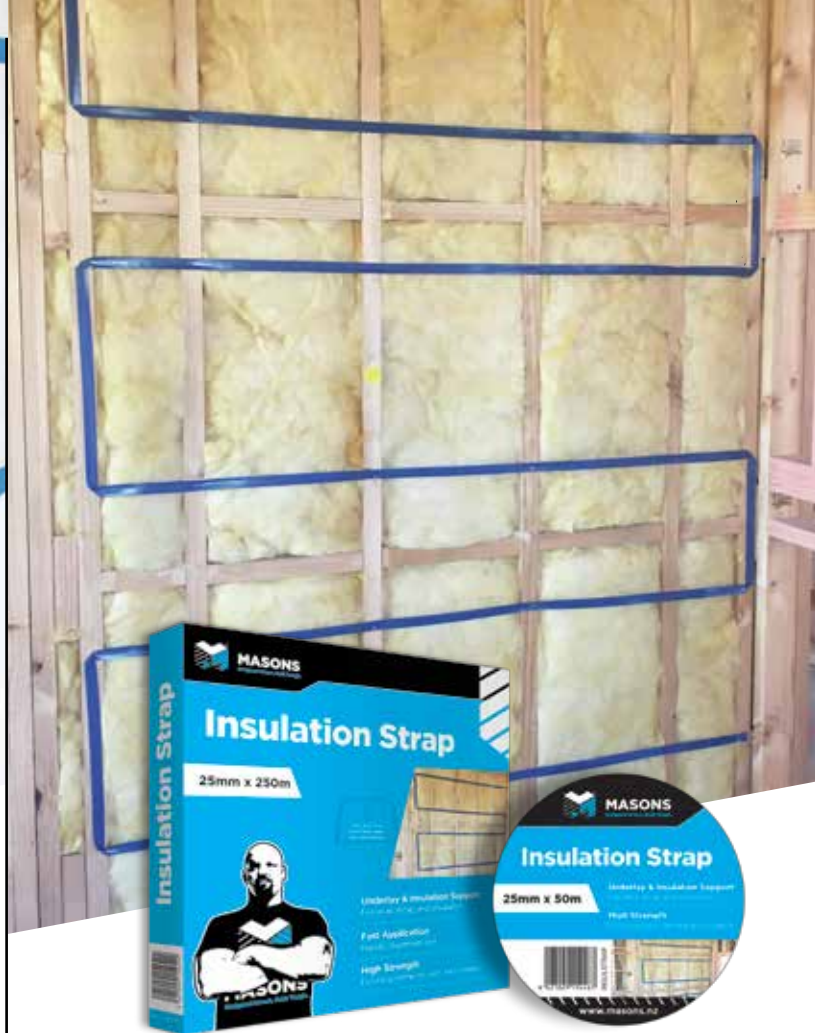
Go to our website masons.nz and fill out the contact form.

&



find us on facebook

Masons NZ - Building Products



WrapStrap

House Wrap Strapping

WrapStrap is a Polythene embossed strap that is installed around the building wrap to keep the insulation in place and prevent it from bulging into the cavity for buildings with a drained cavity application. WrapStrap can also be used as a support for non-self supporting roof underlay.

Masons WrapStrap	Masons Code
Blue pp strap 19mmx300m	WRAPST19X300
Blue pp strap 25mmx250m	WRAPST25X250

Insulation Strap

Insulation & Wrap Strapping

Masons Insulation Strap is a high strength polypropylene woven and coated strap. Used to secure underlay and insulation for roof and wall applications. Available in easy to handle 50m and 250m rolls for fast application.

Masons Insulation Strap	Masons Code
Insulation Strap 25mmx50m	INSULSTRAP
Insulation Strap 25mmx250m	INSULSTRAP250

New Zealand Building Code Standard (NZBC)

The NZBC requires Building-wrap to be restrained from bulging into a drained cavity where stud spacings are greater than 450 mm. This to prevent the building wrap and insulation from protruding into the drained cavity. Acceptable means of achieving this are by using strapping at 300mm centres fixed horizontally and drawn taut.



Dry Fix™

Damp Proof Course



Dry Fix™ is a thick embossed polyethylene film and approved for use for separating timber, wood-based products and metal from concrete, masonry or brick.

Applications

- A moisture barrier and flashing in masonry veneer constructed in accordance with NZBC Acceptable Solution E2/AS2 and NZS 4229.
- Instant shape forming
- An alternative for Bituminous DPC
- Does not react with solvent treated timber
- Inert to most sealants
- Permanent life span non-degradable
- Cost effective

New Zealand Building Code Standard (NZBC)

- Complies to the NZBC
- CodeMark Certified
- Manufactured to AS/NZS2904 - 1995

Physical Properties

- Embossed both sides to a minimum thickness of 750 um
- Impact resistant
- Non-Slip as product is double embossed



Description	Roll Length	Masons Code
Dry Fix 50mm	30m	DPC50
Dry Fix 75mm	30m	DPC75
Dry Fix 90mm	30m	DPC90
Dry Fix 100mm	30m	DPC100
Dry Fix 140mm	30m	DPC140
Dry Fix 150mm	30m	DPC150
Dry Fix 200mm	30m	DPC200
Dry Fix 250mm	30m	DPC250
Dry Fix 300mm	30m	DPC300



NO SUCH THING AS BAD WEATHER...

40 Below - Flashing Tape

Sticks in wet and cold weather conditions

Without the use of a heat gun and primer spray



MASON'S
Designed Smart, Built Tough.



ADHESION IN ALL WEATHER CONDITIONS



ADHESION FROM -40°C up to 65°C



NO PRIMERS OR HEAT GUNS REQUIRED

ONLY 0.2MM THIN



RESISTS UV EXPOSURE FOR UP TO 6 MONTHS

SELF SEALS AROUND NAILS, STAPLES AND SCREWS (New smooth white facer tape only)

AVAILABLE IN 4 SIZES

75mm, 100mm, 150mm & 230mm

**BUY 40 BELOW
SAVE TIME AND MONEY**



MASON'S.NZ





40 Below™

Window Flashing Tape

BEST BUY

40 Below™ Flashing Tape is a 0.2mm thick - All Weather - flashing tape to seal around windows, doors, and other joinery openings as a secondary defence against water penetration. Adhesion from -40°C.

Applications

- Incredible adhesion in all conditions.
- Simple 4 step installation, save time reducing costs.
- Reliable and dependable weather tightness.
- An *Optional* **Corner Guard** is easy to install and increases protection to framing.
- **RIGID AIR BARRIERS** – 40 Below is tested and approved for sealing the joints on Rigid barriers. Tested and approved for use by: BGC Durabarrier and OS'BraceRAP.

NB. *Masons 40 Below Flashing Tape and Masons Corner Guard* must be installed in accordance with the instructions outlined on page 11 of this catalogue.

New Zealand Building Code Standard (NZBC)

- Has been **CodeMark Certified** by Certmark International.
- For a risk score between 0-20 in accordance with NZBC Acceptable Solution E2/AS1.
- Passed NZS3604 Building Wind Zones up to and including 'Extra High'.
- Passes nail seal ability to ASTM 1970-01 section 7.9.
- **New smooth white facer tape** also passes screw sealability to AAMA 711-13.
- **Suitable as a single layer application** over timber frame.

Physical Properties

- **Extremely thin** only **0.2mm**, allows for easier fitting of windows and doors.
- Works in temperatures from **-40°C up to 65°C**.
- **Compatible** with most building wraps.
- **Compatible** with most building sealants - check suitability with sealant manufactures. Alternatively do a patch test before use.



**No Need to use
Primer Spray**



**No Need to use
Heat Guns**

Note: 150mm Wide tape is used for 100mm wide window or door framing. 200mm wide tape is used for 140mm-150mm wide reveals.

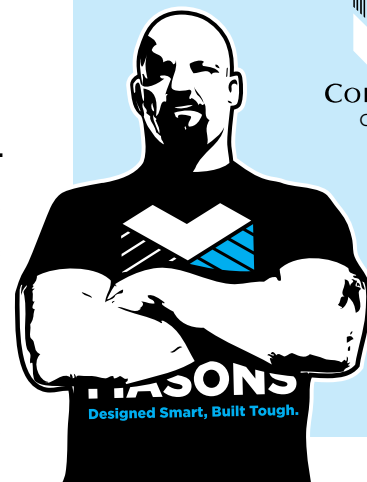
40 Below™ flashing tape	Roll Sizes	Masons Code
40 Below flashing tape 75mm	H 75mm x L 20m	40BELOW75x20
40 Below flashing tape 100mm	H 100mm x L 20m	40BELOW100x20
40 Below flashing tape 150mm	H 150mm x L 20m	40BELOW150x20
40 Below flashing tape 230mm	H 230mm x L 20m	40BELOW230x20



Masons Corner Guard



CODEMARK™
CM40098



Hydro™

Bituminous Window Flashing Tape



Hydro Flashing Tape is a bituminous flashing tape to seal around windows, doors, and other joinery openings as a secondary defence against water penetration. Adhesion from 5°C.

Applications

- It's suitable for timber and steel framed buildings
- Simple 4 step installation, save time reducing costs
- Reliable and dependable weather tightness
- Works in temperatures from **5°C**
- An *Optional* **Corner Guard** is easy to install and increases protection to framing

NB. *Masons Hydro Flashing Tape* and *Masons Corner Guard* must be installed in accordance with the instructions outlined on page 11 of this catalogue.

New Zealand Building Code Standard (NZBC)

- Has been tested and passed by **CodeMark**
- For a risk score between 0-20 in accordance with NZBC Acceptable Solution E2/AS1
- Passed NZS3604 Building Wind Zones up to and including 'Extra High'

Physical Properties

- **Compatible** with most building wraps

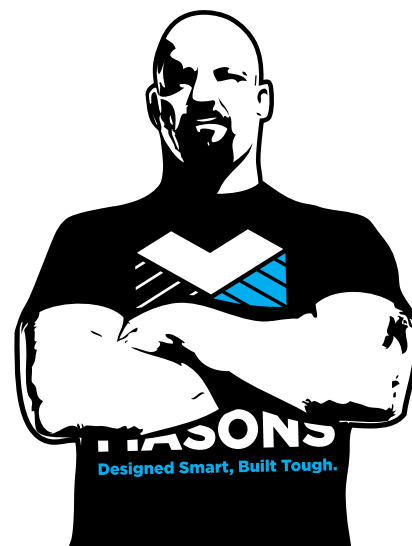
WARNING: Don't apply any solvent based glues or adhesives/sealants to the tape as it will react with the bitumen.



Corner Guard

Note: 150mm Wide tape is used for 100mm wide window or door framing. 200mm wide tape is used for 140mm-150mm wide revels.

Hydro flashing tape	Roll Sizes	Masons Code
Hydro flashing tape 75mm	H 75mm x L 25m	HYDRO75x25
Hydro flashing tape 100mm	H 100mm x L 25m	HYDRO100x25
Hydro flashing tape 150mm	H 150mm x L 25m	HYDRO150x25
Hydro flashing tape 150mm	H 150mm x L 10m	HYDRO150x10
Hydro flashing tape 200mm	H 200mm x L 25m	HYDRO200x25
Masons corner guards pack of 10	pack of 10	HYDRO10CNRGUARD
Masons corner guards pack of 50	pack of 50	HYDROCG50





Floor Guard

Temporary Surface Protection

WATER REPELLENT

HARD WEARING

IMPACT RESISTANT

REUSABLE



Masons Floor Guard is a heavy duty floor protection sheet and is designed to protect surfaces from moisture, marks and damage.

The closed cell foam backing protects the surface from impact and is fused to a strong poly-fabric blue weave that give the product its hard wearing finish.

Floor Guard Protects:

- Natural Stone; Floor, Wall and Bench-tops
- Tiled areas
- Carpet & Timber floors
- Bench tops
- Can be used indoor & outdoor
- Plus many other varied applications

Physical Properties

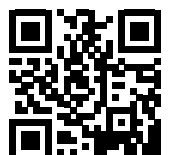
- 2 - 2.5mm thick
- Water repellent
- Easy to cut and install
- Reusable
- Good Impact resistance
- Has high abrasion resistance
- Extreme high decay and rot resistance
- Minimum distortion under traffic use
- Excellent chemical resistance

Masons Floor Guard	Roll Size	Masons Code
Masons Floor Guard	2mm x 1.2m x 20m - 24m ²	MASFLOOR
Masons Seam Tape	50mm x 30m	FLOORGUARDTPE



Masons Seam Tape is the ideal tape for sealing the seams of the Floor Guard underlay.

This tape has extreme adhesion qualities therefore we don't recommend using it on finished floor surfaces as the adhesive may leave residue.



DISCLAIMER: Masons Floor Guard is not breathable - Please contact your substrate supplier/installer to check if the use of Masons Floor Guard can be used to cover the product (especially in the case of sealed or polished concrete etc). Masons take no responsibility for damage to surfaces in which the product is used over.

PEF Rod

P.E.F. Foam Backer

Masons™ PEF Rod is a cylindrical flexible closed cell polyethylene material, available in various diameters from 6mm to 50mm.

Applications

- Masons PEF Rod is used around windows, doors or other penetration openings. It ensures the sealant does not completely fill the cavity.
- Limits the amount and depth of the sealant applied into the joint.
- Acts as a bond break to allow joint movement without undue stress to sealant.
- Acts as a barrier to the flow of sealant through a joint.
- Will assist in providing an around the window frame and penetrations through walls.
- For use with pre-cast concrete slabs and joints between brick and masonry.

Physical Properties

- Weather resistant
- No water absorption, closed cell
- Easy to install from dispenser box
- Wide range of sizes available
- Non toxic, odourless
- Resistant to most chemicals
- Easily compressible, good expansion
- Very light weight

Diameter	Roll Length	Masons Code
6mm	20m	Air Tight6X20
6mm	50m	Air Tight6X50
8mm	20m	Air Tight8X20
8mm	50m	Air Tight8X50
10mm	20m	Air Tight10X20
10mm	50m	Air Tight10X50
13mm	20m	Air Tight13X20
13mm	50m	Air Tight13X50
15mm	20m	Air Tight15X20
15mm	50m	Air Tight15X50
20mm	20m	Air Tight20X20
25mm	10m	Air Tight25X10
30mm	10m	Air Tight30X10
40mm	5m	Air Tight40X5
50mm	5m	Air Tight50X5



Fence Wrap

Masons Sponsored

PROMO

Your Logo Here

Ultimate on-site brand exposure



BRAND
EXPOSURE

OPTIONAL
SAFETY
SYMBOLS

MASONS
SPONSORED



MASONS
Designed Smart, Built Tough.

BUILDING PRODUCTS
www.masons.nz

This single panel can be attached to perimeter fencing on construction sites. Fence Wrap is made from PVC Mesh and contains small holes to let the wind pass through. The product easily attaches to fencing with the use of cable ties and can be reused.

Physical Properties

- Dimensions: Single 2.5m x 1.6m, Other sizes 10lm, 20lm, & 50lm
- 260gsm Strong PVC Mesh
- One eyelet at every 50cm distance
- Strong bands around the edges
- Minimum order total QTY 10lm

Fence Wrap Benefits

- Exceptional brand exposure
- Increase site security and privacy
- Displays important health and safety messages
- Easily attaches to fencing and scaffolding with cable ties
- Can be reused from site to site
- Assists in containing dust and debris

**CONTACT YOUR STORE ACCOUNT MANAGER
FOR MORE INFORMATION**

Masons Floor Guard	Min order QTY	Masons Code
Fence Wrap Mesh 2.5x1.6m	5	FWRAP2.5M
Fence Wrap Mesh 10x1.6m	1	FWRAP10M
Fence Wrap Mesh 20x1.6m	1	FWRAP20M
Fence Wrap Mesh 50x1.6m	1	FWRAP50M





MASONS

Designed Smart, Built Tough.

Cladding Systems

Durali Weatherboard

Plaster Cladding
Substrates and Plaster Systems

SUPERIOR WEATHERBOARD
CLADDING SYSTEM

Durali

NEW



Unique
Patented
Design

DURALI IS PRE-PAINTED

saving you time and money

DURALI HAS A FIRE RATED CORE

suitable for multi storey buildings

DURALI IS DURABLE

and will not warp, split or crack

DURALI IS CODEMARK CERTIFIED

and adheres to NZ building code standards



Product brochures are available online from **masons.nz** just fill out the contact form at the bottom of the page.

Plaster Cladding



MASONS FROM THE FRAME OUT: Enclosure System - Substrate - Flashings - Plaster

MASONS SUBSTRATES FOR PLASTER:

- + Enviro - AAC panel
- + ThermalCrete - Lightweight Panel
- + XRV - Insulated Panel System

The **EasySpec** plaster series was created by Masons to outline the plaster process for each substrate. Depending on your chosen substrate Masons has a system for each:

PlastaBrick - Masonry Brick & Block - Plaster System

PlastaTek - Monotek Sheet - Plaster System

PlastaBlock - XRV & Block - Plaster System

PlastaSlab - Tilt Slab - Plaster System

Bagged - Bagged Brick & Block - Plaster System

Easy to specify through **SmartSpec**,
Masterspec, **Eboss** and **masons.nz**



Enviro™

AAC Floor Panel



Enviro™ AAC - multi level - floor system is ideal for residential and light commercial buildings. Enviro™ gives a solid feel under foot and has excellent noise reduction between floors.

Applications

- Enviro™ 75mm thick Aerated Concrete (AAC) panels are extremely strong, each panel is reinforced through the centre with steel rods for added strength.
- Enviro is fixed to the floor framing of the building using a galvanised bugle for timber framing or a dual grip hex-head screw for steel framing.
- Installation of the panels is quick and can be done by your on-site builders in any weather condition.

Physical Properties

- Panel dimensions: 2200MM x 600MM x 75MM
- Enviro™ only carries a fifth of the weight of that of concrete. Therefore requiring minimal structural considerations and leaving a smaller environmental footprint.
- Dry Density 525 kg/m³
- Compressive Strength 4.0 Mpa
- Bending Strength..... 1000N or above
- Dry Shrinkage Value 0.3-0.5mm/m
- Water Absorption (by volume) Up to 24 - 35%
- Thermal Conductivity..... 0.12 w/mk
- Sound Transmission Class (STC)..... 35 dB for 1000Hz
- Fire Resistance..... 2 hours



Enviro	Masons Code
Enviro Panel, Flooring 2200*600*75mm	ENVPANFLOOR

DWG, DFX and PDF Detail drawings available from [masons.nz](https://www.masons.nz)

HT Green

Polyethylene Concrete Underlay

BEST BUY



HT Green is a 300micron extra thick, super hi-strength, concrete underlay rated “HEAVY DUTY”.

This ‘see through’, tear resistant polyethylene film has been extruded using special resins to promote tough properties within the membrane.

Applications

- HT Green is used as a concrete underlay and a moisture vapour barrier in areas of extreme conditions where protection and strength are required.
- Designed for floors that require a higher impact resistance than standard polyethylene films.
- Extra protection for areas that would potentially be exposed for longer than usual periods prior to concreting. Allowing more durability for extra foot traffic and is an extra precaution for the discerning architect or builder.
- HT Green may be used to cover ground areas under suspended timber floors to prevent the rise of dampness. Ensure that the site is clear of sharp debris. Slit and patch around jack studs or pipe work. All joints must be taped with 50mm Masons Seam Tape.
- Can be used as a Dam Liner

New Zealand Building Code Standard (NZBC)

- Complies with (A) AS2879:1995, 5.3.3 vapour barrier for concrete underlays
- HT Green must be installed to E2/AS1 10.3.3. Damp Proof Membranes, and must be laid on a properly prepared base as required by NZS3604:1990.E8.2. by a licensed building practitioner.

Durability

- HT Green meets the performance requirements of NZBC Clauses B2, Durability B2.3.1[a] 50 years and B2.3.1(b) 15 years, E2 External Moisture.
- HT Green must be inspected for tears and penetrations.
- HT Green should not be left exposed for more than 28 days.

Physical Properties

- HT Green Exceeds the Hi-impact resistant film test AS1326:1972(IR3), and is manufactured with premium resins to achieve higher strength.

Description	Roll Length	Masons Code
HT Green 4m wide - 100m ²	25m	HTGREEN300/100M
Masons Seam Tape	50mm x 30m	FLOORGUARDTPE





Easy-Form™

Adhesive Expansion Joint Filler

NEW

“Used heavily in the Australian concrete industry and now available in New Zealand.”

Easy-Form is an expansion joint filler for cast-in-situ concrete. It is self adhesive and has a ZIP TOP that can be torn off for when a sealant is to be used.

Applications

- Anywhere an element needs to be permanently separated or provision made for expansion and contraction in concrete slabs: Pavements, driveways, floor slabs etc.
- Where driveways or pavements meet: building claddings, retaining walls, pre poured columns or plant boxes.
- Between swimming pools and concrete paving.
- Solution to weed control between joints.

Zip Top

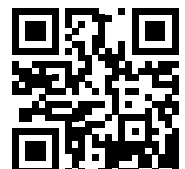
- The Zip Top provides installation options for when a sealant is to be used.
- All Easy-Form is zipped approx. 10mm from the edge.
- The zipping ensures a clean tear every time.
- NB. When the application does not require a sealant, Easy-Form should be installed **upside down**, with the zipped top down to avoid unwanted removal.

Physical Properties

- Easy to use; Light, flexible and easily cut on site with a sharp knife.
- Supplied with one-sided Acrylic Adhesive for faster installation.
- Continuous rolls.
- Physically cross-linked, polyolefin foam with an outer skin.
- Superior compression and recovery properties vital to ensure a good joint filler.
- Free of heavy metals, plasticisers and CFCs.
- Closed Cell, Non absorbent; Compatible with most commonly used sealants and impervious to most liquids.



Easy-Form	Masons Code
Masons Foam Easy-Form 10mmx50mmx25m	FMEF10X50X25
Masons Foam Easy-Form 10mmx75mmx25m	FMEF10X75X25
Masons Foam Easy-Form 10mmx100mmx25m	FMEF10X100X25
Masons Foam Easy-Form 10mmx125mmx25m	FMEF10X125X25
Masons Foam Easy-Form 10mmx150mmx25m	FMEF10X150X25
Masons Foam Easy-Form 10mmx200mmx25m	FMEF10X200X25
Masons Foam Easy-Form 10mmx250mmx25m	FMEF10X250X25
Masons Foam Easy-Form 10mmx300mmx25m	FMEF10X300X25



Hydro™ Seal

Bituminous Masonry Sealer



Hydro Seal is a black waterproof membrane that has been formulated to act as a barrier behind retaining walls and buried structures.

Applications

- Suitable for concrete, concrete block and brick-work, wood and metal.
- Hydro Seal is simple to apply by brush or roller
- Is compatible with green concrete
- Has excellent adhesion to masonry and concrete etc.
- Fast cure time
- Low water permeability
- Sulphates and ground salts resistant

New Zealand Building Code Standard (NZBC)

- Passed the vapour resistance level requirements for a water vapour barrier as per E2/AS1
BRANZ Rapport number DC2547
- Meets moisture vapour permeability requirements of NZS 3604:2011

Physical Properties

Form:	Thyrotropic liquid mixed
Solid content:	60%
Density:	1.00kg/L
Application temperature:	5°C to 50°C
Drying Time:	4 - 6 hours at 20°C, 12 - 24 hours should be left between coatings
Coverage:	Additional to the primer coat - The minimum total application rate is 1 Liter per m ² (2 coats of 1/2 litre per m ² each). Depending on the substrate quantities this might vary slightly.
Limitations:	Not to be exposed to sunlight. Not to be over-coated with paint
Shelf live:	12 months when stored in original packaging. Store between 1°C - 35°C

TIP: Protect Hydro™ Seal with Masons FOAM GUARD

Hydro™ Seal membrane can be subject to punctures and abrasion due to coarse backfill. By simply applying the self adhesive foam guard you significantly reduce the risk of this happening.

Masons Hydro™ Seal	Bucket Size	Masons Code
Hydro Bituminous Surface Treatment 4L	4 Litre	HYDROSEAL4L
Hydro Bituminous Surface Treatment 20L	20 Litre	HYDROSEAL20L





Foam Guard

Adhesive Membrane protection

NEW

Foam Guard Adhesive (ADH) is an advanced protection foam with a long-lasting adhesive backing. Foam Guard protects waterproofing and tanking membranes from punctures, UV exposure and damage during construction.

Applications

- Foam Guard is developed to protect numerous types of membrane systems both in the horizontal and vertical plane and above and below ground.
- Fast install over other protection methods
- Performs as a slip sheet under toppings
- Membrane protection for gravel and garden rooftops

Physical Properties

Foam Guard is a roll off closed cell - cross linked foam fused to a strong poly fabric face. It is backed with an ultra long-lasting adhesive.

- UV stable surface
- Minimal expansion or distortion when exposed to heat or sunlight
- Has high abrasion resistance
- Extreme high decay and rot resistance
- Good impact resistance
- Minimum distortion under traffic use
- Extreme adhesion that withstands severe weather conditions

Installation Guide

Installation procedures to Install Foam Guard self stick correctly

1. Ensure surface is clean, dust free and dry
2. During application ensure all air is expelled between face of membrane and Foam Guard sheet
3. Allow to overlap Foam Guard sheet by minimum of 50mm on each side
4. Apply adequate pressure to complete surface area of contact to ensure positive adhesion to substrate
5. On vertical applications, should Foam Guard be left exposed for extended periods it is recommended that Masons **SEAM TAPE** be applied at top edge of membrane to prevent possible edge peel

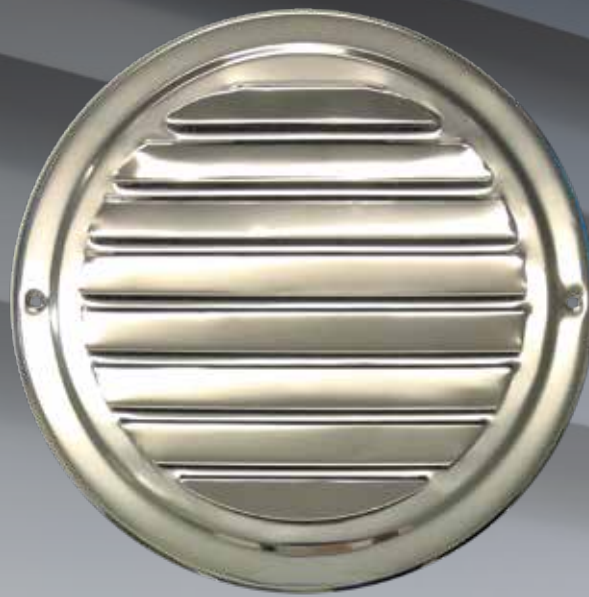
NOTE: Application to cementitious or highly textured surfaces in the vertical plane will not bond successfully. It is recommended that a small trial patch be carried out on all surfaces to ensure proper adhesion. Extreme cold conditions may also affect bonding.



Description	Roll Size	Masons Code
Foam Guard Adhesive 24m ²	H 1.2m x L 20m	FLRGRDADH1200
Masons Seam Tape	50mm x 30m	FLOORGUARDTPE

This product has a long-lasting adhesive backing. Not suitable for temporary surface protection.

GIVE YOUR HOME THE FINISHING TOUCH IT DESERVES



Stainless Steel Vent Range

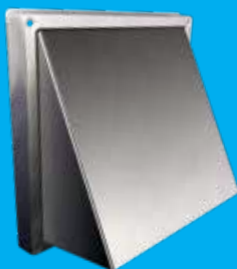
Exterior vents that are stylish and durable
are a rewarding detail on every building.



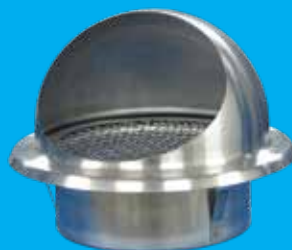
MASONS
Designed Smart, Built Tough.



GRAVITY GRILLE
Available in:
100, 125 & 150mm



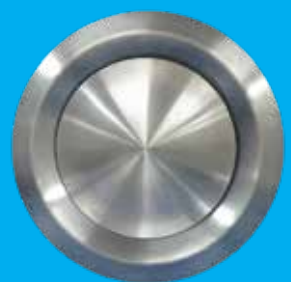
COWL WALL VENT
Available in:
100, 125 & 150mm



DOME COWL VENT
Available in:
100, 125 & 150mm



**LOUVRE GRILLE
ROUND**
Available in:
100, 125 & 150mm



AIR DIFFUSER
Available in:
100, 125, 150 & 200mm



Stainless Steel Vents

QUALITY DESIGN FINISH

304 Stainless Steel

EXTRA WEATHER PROTECTION

Due to rounded hood design

EASY INSTALLATION

Mounts directly to ductwork

WITH MESH SCREEN

Made from durable Stainless Steel



Product Description	Neck Size mm	Face Size (mm)	Product Code
Dome Cowl Vent 100mm SS	100	R 150	VENTDMSS100MM
Dome Cowl Vent 125mm SS	125	R 187	VENTDMSS125MM
Dome Cowl Vent 150mm SS	150	R 208	VENTDMSS150MM

QUALITY DESIGN FINISH

304 Stainless Steel.

EASY INSTALLATION

Mounts directly to ductwork

WITH INSECT MESH SCREEN

Made from durable Stainless Steel



Product Description	Neck Size mm	Face Size (mm)	Product Code
Louvre Grille Round 100mm SS	100	R 143	VENTEXSS100MM
Louvre Grille Round 125mm SS	125	R 177	VENTEXSS125MM
Louvre Grille Round 150mm SS	150	R 208	VENTEXSS150MM

Cowl Wall Vent

QUALITY DESIGN FINISH

304 Stainless Steel. With rubber seal

EXTRA WEATHER PROTECTION

Due to Back draught Shutter

EASY INSTALLATION

Mounts directly to ductwork

WITH BIRD MESH SCREEN

Made from durable Stainless Steel



Product Description	Neck Size mm	Face Size (mm)	Product Code
Cowl Wall Vent 100mm SS	100	160 x 160	VENTCWLSS100MM
Cowl Wall Vent 125mm SS	125	185 x 185	VENTCWLSS125MM
Cowl Wall Vent 150mm SS	150	185 x 185	VENTCWLSS150MM

EXTRA WEATHER PROTECTION

Due to Back draught Shutter

SCRATCH RESISTANT SURFACE

Made from ABS plastic

EASY INSTALLATION

Mounts directly to ductwork

WITH BIRD BARS



Product Description	Neck Size mm	Face Size (mm)	Product Code
Cowl Wall Vent 100mm White Plst	100	190 x 190	VENTCOWL100
Cowl Wall Vent 125mm White Plst	125	190 x 190	VENTCOWL125
Cowl Wall Vent 150mm White Plst	150	190 x 190	VENTCOWL150



Gravity Grille

QUALITY 304 STAINLESS STEEL

With rubber seal

EXTRA WEATHER PROTECTION

Due to back draught louvres

EASY INSTALLATION

Mounts directly to ductwork



Product Description	Neck Size mm	Face Size (mm)	Product Code
Gravity Grille 100mm SS	100	160 x 160	VENTGLSS100MM
Gravity Grille 125mm SS	125	185 x 185	VENTGLSS125MM
Gravity Grille 150mm SS	150	185 x 185	VENTGLSS150MM

EXTRA WEATHER PROTECTION

Due to back draught louvres

SCRATCH RESISTANT SURFACE

Made from ABS plastic

EASY INSTALLATION

Mounts directly to ductwork

WITH INSECT MESH SCREEN

Made from durable Stainless Steel



Product Description	Neck Size mm	Face Size (mm)	Product Code
Gravity Grille 100mm White Plst	100	125 x 125	VENTGRAVG100
Gravity Grille 125mm White Plst	125	150 x 150	VENTGRAVG125
Gravity Grille 150mm White Plst	150	175 x 175	VENTGRAVG150
Gravity Grille 200mm White Plst	200	225 x 225	VENTGRAVG200

Grilles

MOUNTS DIRECTLY TO DUCTWORK

Because of the tapered neck

SCRATCH RESISTANT SURFACE

Made from ABS plastic

EASY INSTALLATION

Supplied with 4 screws

WITH INSECT MESH SCREEN

Made from durable Stainless Steel



Product Description	Neck Size mm	Face Size (mm)	Product Code
Eggcrate Grille 100mm White Plst	100	125 x 125	VENTEGG100
Eggcrate Grille 125mm White Plst	125	150 x 150	VENTEGG125
Eggcrate Grille 150mm White Plst	150	175 x 175	VENTEGG150
Eggcrate Grille 200mm White Plst	200	230 x 230	VENTEGG200

MOUNTS DIRECTLY TO DUCTWORK

Because of the tapered neck

SCRATCH RESISTANT SURFACE

Made from ABS plastic

EASY INSTALLATION

Supplied with 4 screws

WITH INSECT MESH SCREEN

Made from durable Stainless Steel



Product Description	Neck Size mm	Face Size (mm)	Product Code
Fixed Louvre Grille 100mm White Plst	100	125 x 125	VENTFIXLG100
Fixed Louvre Grille 125mm White Plst	125	150 x 150	VENTFIXLG125
Fixed Louvre Grille 150mm White Plst	150	175 x 175	VENTFIXLG150
Fixed Louvre Grille 200mm White Plst	200	225 x 225	VENTFIXLG200



Air Diffuser

304 Stainless Steel

QUALITY DESIGN FINISH

304 Stainless Steel

ADJUSTABLE AIRFLOW

By turning the cone centre

EASY INSTALLATION

Via clip system



Product Description	Neck Size mm	Face Size (mm)	Product Code
Air Diffuser Valve Round SS 100mm	100	R 140	VENTAVSS100MM
Air Diffuser Valve Round SS 125mm	125	R 175	VENTAVSS125MM
Air Diffuser Valve Round SS 150mm	150	R 220	VENTAVSS150MM
Air Diffuser Valve Round SS 200mm	200	R 295	VENTAVSS200MM

360 DEGREE AIR DELIVERY

For all temperatures

ADJUSTABLE AIRFLOW

By turning the cone centre

EASY INSTALLATION

Removing and maintaining

SCRATCH RESISTANT SURFACE

Made from ABS plastic



Product Description	Neck Size mm	Face Size (mm)	Product Code
Air Diffuser Valve Round 100mm White plst	100	R 175	VENTDIFF100MM
Air Diffuser Valve Round 150mm White plst	150	R 260	VENTDIFF150MM
Air Diffuser Valve Round 200mm White plst	200	R 320	VENTDIFF200MM
Air Diffuser Valve Round 250mm White plst	250	R 395	VENTDIFF250MM

Vent Range

Exterior Selection

NEW

STRONG DURABLE DESIGN

1.2mm Thick

QUALITY DESIGN FINISH

Powder Coated or Stainless Steel

WITH INSECT MESH SCREEN



Masons sleek looking Air Vents assist with the removal of moisture, and the circulation of air to vent the cavity passage behind the cladding. The vents are designed with quality in mind; they are made out of a thicker material than standard vents and include an insect mesh screen.

Applications

- Masons Vent Range can be used in conjunction with any cladding system that requires a ventilated cavity, including, bricks, blocks, and stone.
- Designed to vermin-proof the vent opening and restrict driving rain.



Masons Block Vent

Made from 1.2mm thick aluminium this strong design will complement your block work.

Product Description	Product Code
Grey Aluminium Block Vent 450x250mm	VENTBLK450X250MM

Product Description	White Aluminium	Silver Aluminium	Stainless Steel
Vent 125x100mm	VENTALWH125X100	VENTALSLV125X100	VENTSS125X100
Vent 125x150mm	VENTALWH125X150	VENTALSLV125X150	VENTSS125X150
Vent 225x75mm	VENTALWH225X75	VENTALSLV225X75	VENTSS225X75
Vent 225x150mm	VENTALWH225X150	VENTALSLV225X150	VENTSS225X150
Vent 250x200mm	VENTALWH250X200	VENTALSLV250X200	VENTSS250X200
Vent 300x100mm	VENTALWH300X100	VENTALSLV300X100	VENTSS300X100
Vent 300x150mm	VENTALWH300X150	VENTALSLV300X150	VENTSS300X150
Vent 300x200mm	VENTALWH300X200	VENTALSLV300X200	VENTSS300X200
Vent 300x300mm	VENTALWH300X300	VENTALSLV300X300	VENTSS300X300



MASONS
Designed Smart, Built Tough.

Access Panel

Durable White Powder Coated Steel

NEW

QUALITY FINISH

Powder coated steel

HANDLE-LESS

Push catch closing system

EASY INSTALLATION

Screws provided



Masons Access Panel provides easy access through dry lined walls and ceilings to conceal plumbing and electrical. Masons Access Panel is made from quality powder coated steel with a Push Catch closing system. Providing easy access requirements through non-fire rated walls and ceilings for residential and commercial buildings.

Applications

Easy access to:

Plumbing; Connections, valves, stopcocks, spa pumps

Electrical; Fuse boxes, control switches, security systems, internet connections, heating and ventilation systems.

Roof Access; for the 600mm model

Installation Guide

1. Cut a hole in the plaster board to match panel size adding 2.5mm each side to allow for clearance. (eg 205 x 205mm for the 200mm panel)
2. Slot the hatch (without door for easy installation) into the opening
3. Bend the steel tie tags, located around the inside of the frame, to the vertical position and insert the panel into the opening.
4. Either secure the steel Tie tags to the Stud or support framing or fold them over to secure to the plaster board.
5. Fix the screws provided through the access panel and tags to the timber frame supports until the framing is securely fixed to the timber frame supports.
6. Insert the door and secure with screws provided.



Product Description	Product Code	Sizing Indication
Access Panel 200x200mm White Powder coat	VENTMCOVER200	Hand Access
Access Panel 400x400mm White Powder coat	VENTMCOVER400	Head Access
Access Panel 600x600mm White Powder coat	VENTMCOVER600	Ceiling; Head & Shoulder Access

BrickTies

Heavy Duty Brick Ties



**NEW SIZE
90MM**

New Zealand's only Brick Tie that holds a CodeMark Certification

Applications

- Can be used to tie any masonry veneer to a structural frame
- Suitable for Dry and Wet Bed applications

New Zealand Building Code Standard (NZBC)

- **CodeMark Certified**
- Masons Brick Ties are manufactured to comply with **AS/NZS2699.1.2000**

Physical Properties

- Rated **Heavy Duty (EH) Earthquake**
- Available in three lengths: 85 mm, 90mm, 110 mm & 135 mm
- Available in hot dipped galvanised & 316 stainless steel

The following is to be used as a guide only

HORIZONTAL	VERTICAL
400mm	500mm
450mm	450mm
600mm	400mm

Approx. 5 brick ties per m² | 100 ties per 1000 bricks



TIP: Use Masons Brick or Block Lock for masonry areas prone to cracking (external corners, stack bond, above windows, doors & openings)

Description	QTY	Building Zone	Masons Code
BrickTie 85mm - Hot dipped galvanised	250	Normal Zone	TIE85HD
BrickTie 85mm - Hot dipped galvanised	500	Normal Zone	TIE85HD(500)
BrickTie 85mm - in Bag - Hot dipped galvanised	500	Normal Zone	TIE85HDBAG500
BrickTie 85mm - Hot dipped galvanised with 270 Tek Screws 35mm	250	Normal Zone	TIE85HDSF30
BrickTie 90mm - Hot dipped galvanised	250	Normal Zone	TIE90HD
BrickTie 110mm - Hot dipped galvanised	250	Normal Zone	TIE110HD
BrickTie 135mm - Hot dipped galvanised	250	Normal Zone	TIE135HD
BrickTie 85mm - Stainless Steel	250	Sea-spray Zone	TIE85SS
BrickTie 85mm - Stainless Steel with 270 Steel Frame Tek Screws 35mm	250	Sea-spray Zone	TIE85SSSF30
BrickTie 90mm - Stainless Steel	250	Sea-spray Zone	TIE90SS
BrickTie 110mm - Stainless Steel	250	Sea-spray Zone	TIE110SS
BrickTie 135mm - Stainless Steel	250	Sea-spray Zone	TIE135SS

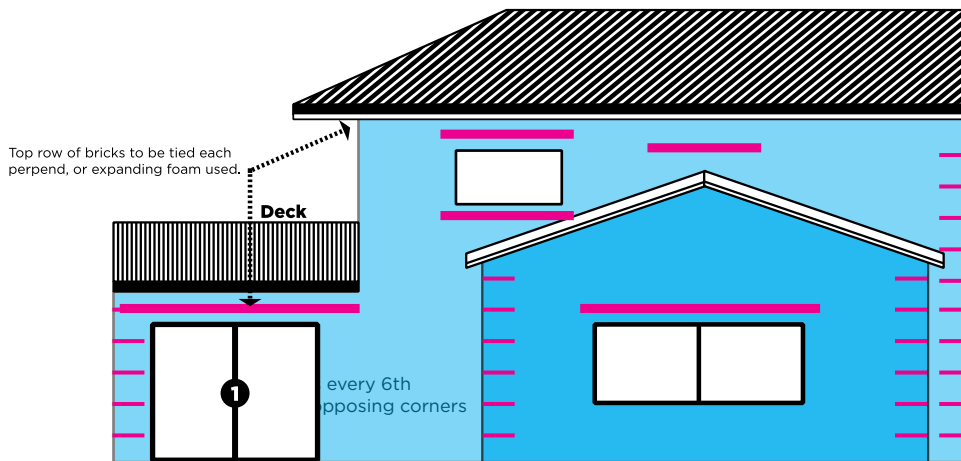
Also Available with steel frame Tek Screws



Brick & Block Lock 4.0mm

Masonry Reinforcing

Bricklock and Blocklock products have been developed to strengthen brick and block veneer walls. An excellent product for areas that are prone to cracking or movement. Made from 4mm thick galvanised or stainless steel rods.



Applications

When specifying or installing Bricklock, a common sense approach to where the product is installed must be used.

Most common areas to use the reinforcing are: Above all windows and to all external corners.

Other vulnerable areas are: where there is a gap smaller than 800mm, for example: A Window near a deck. Where a window meets a roof top. Roof top gable meets a soffit

Disclaimer - 'Bricklock' is designed to add strength to the brick veneer and is over and above normal New Zealand Building Code for brick veneer construction. At no stage do Masons guarantee that it will completely stop any possible cracking in the veneer.

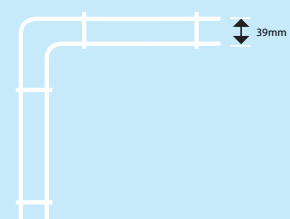
Description	QTY	Masons Code
Bricklock 4.0mm Corner 25cm - Stainless Steel	10	BRICKLOCK CNR SS
Bricklock 4.0mm Corner 26.5cm - Galvanised	10	BRICKLOCK CNRGAL
Bricklock Straight 4.0mm 2m - Stainless Steel	10	BRICKLOCK STR SS
Bricklock Straight 4.0mm 2m - Galvanised	10	BRICKLOCK STRGAL
Bricklock Drop 4.0mm 70cm - Galvanised	10	BRICKLOCK DRPGAL
Blocklock Straight 4.0mm 140mmx2m - SS	10	BLOCKLOKSSSTR2M
Blocklock Straight 4.0mm 140mmx2m - Galv	10	BLOCKLOKGALSTR2M



Brick & Block lock Straight
Assists in crack prevention on bricks of blocks that are laid in stacked bond.
Or when there is only a small row of bricks less than 800mm.
Masons recommended to install Bricklock every **5th** course.



Bricklock Corner
Assists in crack prevention on external corners.
Masons recommended to install a Bricklock corner every **5th** course.





All product documentation Easy to find and download!

- > INSTALLATION GUIDES
- > MATERIAL SAFETY DATA SHEETS (MSDS)
- > CODEMARK & BRANZ CERTIFICATES
- > SPECIFICATION DOCUMENTATION

JOIN OUR ONLINE
COMMUNITY



find us on **facebook**

Masons NZ - Building Products

SPECIFYING MASON'S PRODUCTS

Everything you require to specify our products and pass council consent can be found on our website. **WWW.MASON'S.NZ** or on the following specifying websites:

masterspec **mi**products **PRODUCTSPEC** **SMARTSPEC**  **eboss**



MASON'S
Designed Smart, Built Tough.

PHONE SUPPORT

Call 0800 522 533
Mon-Fri 7.00am - 4.30pm